

Moon Mother Hemp Company

2425 Canyon Boulevard
Boulder, CO 80302
jessica@moonmotherhemp.com
(303) 442-2983
Lic. #

Sample: 12TRC005219.O5343

Strain: Renew Eye Serum
Sample Received: 12/20/2019; Report Created: 01/06/2020
Leaf Inventory/Lot ID: ; Leaf Pre-Transfer Inventory/Lot ID:
Leaf Batch ID: ; Leaf Pre-Transfer Batch ID:
Leaf Manifest ID:

Renew Eye Serum

Other, Industrial Hemp
External Batch ID: 121902



**4.40
mg/unit**

THC Potency

**130.00
mg/unit**

CBD Potency

**134.40
mg/unit**

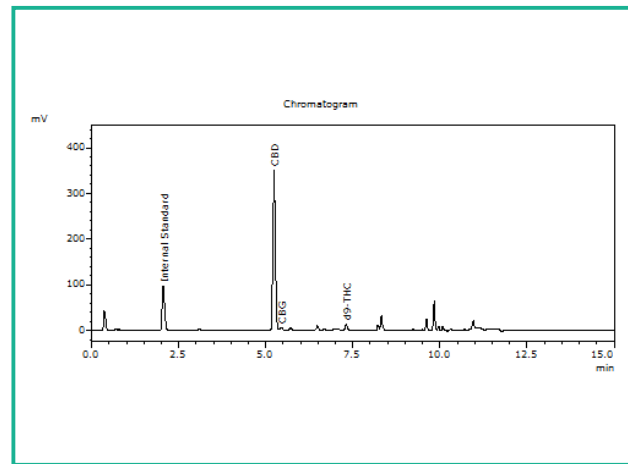
Total Potency*

Cannabinoids

1 Unit = Bottle, 10g

Analyte	Mass mg/unit	Mass mg/g
THCa	ND	ND
Δ9-THC	4.40	0.44
CBD	130.00	13.00
CBDa	ND	ND
CBN	ND	ND
Δ8-THC	ND	ND
THCV	ND	ND
CBDV	ND	ND
CBG	2.00	0.20
CBGa	ND	ND
CBC	ND	ND
Total	136.40	13.64

Chromatogram



THC Potency = THCa * 0.877 + Δ9-THC; CBD Potency = CBDa * 0.877 + CBD; LOQ = Limit of Quantitation; Total Potency* = Total THC + Total CBD. Unless otherwise stated all quality control samples performed within specifications established by the Laboratory.

908 N. Howard St., Suite 101
Spokane, WA
(509) 284-7522
<http://traceanalytics.com/>
Lic# 0014

Julie Kowalski

Julie Kowalski
CSO

Confident Cannabis
All Rights Reserved
support@confidentcannabis.com
(866) 506-5866
www.confidentcannabis.com

