

Moon Mother Hemp Company

2425 Canyon Boulevard
Boulder, CO 80302
jessica@moonmotherhemp.com
(303) 442-2983
Lic. #

Sample: 05TRC002819.O1966

Strain: Skin Balm 250mg
Sample Received: 05/07/2019; Report Created: 05/16/2019
Leaf Inventory/Lot ID: ; Leaf Pre-Transfer Inventory/Lot ID:
Leaf Batch ID: ; Leaf Pre-Transfer Batch ID:
Leaf Manifest ID:

Skin Balm 250mg

Other, Industrial Hemp
External Batch ID:



**8.44
mg/unit**

THC Potency

**256.08
mg/unit**

CBD Potency

**264.52
mg/unit**

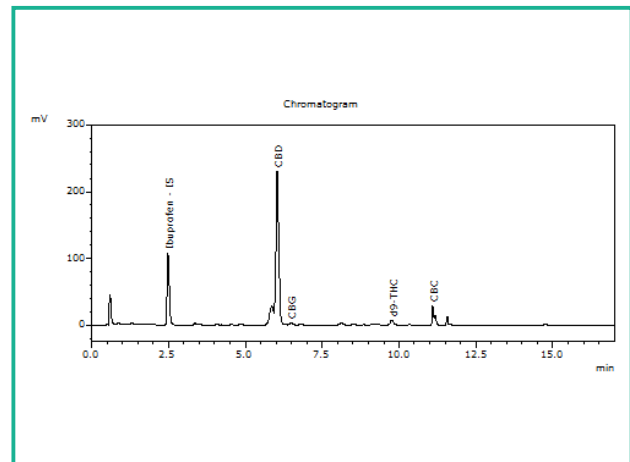
Total Potency*

Cannabinoids

1 Unit = 1 oz Jar, 29.1g

Analyte	Mass mg/unit	Mass mg/g
THCa	ND	ND
Δ9-THC	8.44	0.29
CBD	256.08	8.80
CBDa	ND	ND
CBN	ND	ND
Δ8-THC	ND	ND
THCV	ND	ND
CBDV	ND	ND
CBG	3.20	0.11
CBGa	ND	ND
CBC	6.69	0.23
Total	274.41	9.43

Chromatogram



THC Potency = THCa * 0.877 + Δ9-THC; CBD Potency = CBDa * 0.877 + CBD; LOQ = Limit of Quantitation; Total Potency* = Total THC + Total CBD. Unless otherwise stated all quality control samples performed within specifications established by the Laboratory.



Moon Mother Hemp Company

2425 Canyon Boulevard
Boulder, CO 80302
jessica@moonmotherhemp.com
(303) 442-2983
Lic. #

Sample: 05TRC002819.O1966

Strain: Skin Balm 250mg
Sample Received: 05/07/2019; Report Created: 05/16/2019
Leaf Inventory/Lot ID: ; Leaf Pre-Transfer Inventory/Lot ID:
Leaf Batch ID: ; Leaf Pre-Transfer Batch ID:
Leaf Manifest ID:

Skin Balm 250mg

Other, Industrial Hemp
External Batch ID:



Microbials

Pass

Analyte	Limit	Units	Status
E. Coli	1	CFU/g	Pass
Salmonella	1	CFU/g	Pass
Bile-Tolerant Gram-Negative Bacteria	10000	ND	Pass

LOQ = Limit of Quantitation; TNC = Too Numerous to Count; Unless otherwise stated all quality control samples performed within specifications established by the Laboratory.

908 N. Howard St., Suite 101
Spokane, WA
(509) 284-7522
<http://traceanalytics.com/>
Lic# 0014

Sara Minier
Senior Scientist

Confident Cannabis
All Rights Reserved
support@confidentcannabis.com
(866) 506-5866
www.confidentcannabis.com



This product has been tested by Trace Analytics, Inc using valid testing methodologies and a quality system as required by state law. Values reported relate only to the product tested. Trace Analytics, Inc makes no claims as to the efficacy, safety or other risks associated with any detected or non-detected levels of any compounds reported herein. This Certificate shall not be reproduced except in full, without the written approval of Trace Analytics, Inc. Lic# 0014 - Foreign Matter (Visual Inspection) - Moisture (Moisture Analyzer) - Water Activity (Water Activity Meter) - Microbiological (3M Petrifilm/qPCR) - Potency (HPLC-UV) - Residual Solvents (GCMS) - Mycotoxins (ELISA)

Moon Mother Hemp Company

2425 Canyon Boulevard
Boulder, CO 80302
jessica@moonmotherhemp.com
(303) 442-2983
Lic. #

Sample: 05TRC002819.O1966

Strain: Skin Balm 250mg
Sample Received: 05/07/2019; Report Created: 05/16/2019
Leaf Inventory/Lot ID: ; Leaf Pre-Transfer Inventory/Lot ID:
Leaf Batch ID: ; Leaf Pre-Transfer Batch ID:
Leaf Manifest ID:

Skin Balm 250mg

Other, Industrial Hemp
External Batch ID:



Pesticides

Pass

No Residues Detected

Analyte	LOQ	ULOQ	Limit	Mass	Status
---------	-----	------	-------	------	--------

LOQ = Limit of Quantitation; The reported result is based on a sample weight with the applicable moisture content for that sample; Unless otherwise stated all quality control samples performed within specifications established by the Laboratory.

908 N. Howard St., Suite 101
Spokane, WA
(509) 284-7522
<http://traceanalytics.com/>
Lic# 0014



Derek Laine
Senior Scientist

Confident Cannabis
All Rights Reserved
support@confidentcannabis.com
(866) 506-5866
www.confidentcannabis.com



This product has been tested by Trace Analytics, Inc using valid testing methodologies and a quality system as required by state law. Values reported relate only to the product tested. Trace Analytics, Inc makes no claims as to the efficacy, safety or other risks associated with any detected or non-detected levels of any compounds reported herein. This Certificate shall not be reproduced except in full, without the written approval of Trace Analytics, Inc. Lic# 0014 - Foreign Matter (Visual Inspection) - Moisture (Moisture Analyzer) - Water Activity (Water Activity Meter) - Microbiological (3M Petrifilm/qPCR) - Potency (HPLC-UV) - Residual Solvents (GCMS) - Mycotoxins (ELISA)

Moon Mother Hemp Company

2425 Canyon Boulevard
Boulder, CO 80302
jessica@moonmotherhemp.com
(303) 442-2983
Lic. #

Sample: 05TRC002819.O1966

Strain: Skin Balm 250mg
Sample Received: 05/07/2019; Report Created: 05/16/2019
Leaf Inventory/Lot ID: ; Leaf Pre-Transfer Inventory/Lot ID:
Leaf Batch ID: ; Leaf Pre-Transfer Batch ID:
Leaf Manifest ID:

Skin Balm 250mg

Other, Industrial Hemp
External Batch ID:



Residual Solvents

Pass

Analyte	LOD	Limit	Mass	Status
	PPM	PPM	PPM	
Acetone	1.0	5000.0	ND	Pass
Benzene	1.0	2.0	ND	Pass
Butanes	1.0	5000.0	ND	Pass
Chloroform	1.0	2.0	ND	Pass
Cyclohexane	1.0	3880.0	ND	Pass
Dichloromethane	1.0	600.0	ND	Pass
Ethyl-Acetate	1.0	5000.0	ND	Pass
Heptanes	1.0	5000.0	ND	Pass
Hexanes	1.0	290.0	ND	Pass
Isopropanol	1.0	5000.0	ND	Pass
Methanol	1.0	3000.0	ND	Pass
Pentane	1.0	5000.0	ND	Pass
Propane	1.0	5000.0	ND	Pass
Toluene	1.0	890.0	ND	Pass
Xylenes	1.0	2170.0	ND	Pass

LOQ = Limit of Quantitation; The reported result is based on a sample weight with the applicable moisture content for that sample; Unless otherwise stated all quality control samples performed within specifications established by the Laboratory.



Moon Mother Hemp Company

2425 Canyon Boulevard
Boulder, CO 80302
jessica@moonmotherhemp.com
(303) 442-2983
Lic. #

Sample: 05TRC002819.O1966

Strain: Skin Balm 250mg
Sample Received: 05/07/2019; Report Created: 05/16/2019
Leaf Inventory/Lot ID: ; Leaf Pre-Transfer Inventory/Lot ID:
Leaf Batch ID: ; Leaf Pre-Transfer Batch ID:
Leaf Manifest ID:

Skin Balm 250mg

Other, Industrial Hemp
External Batch ID:



Heavy Metals

Pass

Analyte	Mass	LOQ	Limit	Status
	PPM	PPM	PPM	
Arsenic	ND		2.000	Pass
Cadmium	ND		0.820	Pass
Lead	ND		1.200	Pass
Mercury	ND		0.400	Pass

Notes: Subcontracted by Medicine Creek Analytics, 3700 Pacific HWY E, Ste 400, Fife, WA 98424

LOQ = Limit of Quantitation; The reported result is based on a sample weight with the applicable moisture content for that sample; Unless otherwise stated all quality control samples performed within specifications established by the Laboratory.

908 N. Howard St., Suite 101
Spokane, WA
(509) 284-7522
<http://traceanalytics.com/>
Lic# 0014

Sara Minier
Senior Scientist

Confident Cannabis
All Rights Reserved
support@confidentcannabis.com
(866) 506-5866
www.confidentcannabis.com



This product has been tested by Trace Analytics, Inc using valid testing methodologies and a quality system as required by state law. Values reported relate only to the product tested. Trace Analytics, Inc makes no claims as to the efficacy, safety or other risks associated with any detected or non-detected levels of any compounds reported herein. This Certificate shall not be reproduced except in full, without the written approval of Trace Analytics, Inc. Lic# 0014 - Foreign Matter (Visual Inspection) - Moisture (Moisture Analyzer) - Water Activity (Water Activity Meter) - Microbiological (3M Petrifilm/qPCR) - Potency (HPLC-UV) - Residual Solvents (GCMS) - Mycotoxins (ELISA)

Moon Mother Hemp Company

2425 Canyon Boulevard
Boulder, CO 80302
jessica@moonmotherhemp.com
(303) 442-2983
Lic. #

Sample: 05TRC002819.O1966

Strain: Skin Balm 250mg
Sample Received: 05/07/2019; Report Created: 05/16/2019
Leaf Inventory/Lot ID: ; Leaf Pre-Transfer Inventory/Lot ID:
Leaf Batch ID: ; Leaf Pre-Transfer Batch ID:
Leaf Manifest ID:

Skin Balm 250mg

Other, Industrial Hemp
External Batch ID:



Mycotoxins

Pass

Analyte	LOQ	Limit	Units	Status
	PPB	PPB	PPB	
Aflatoxins		20.00	5.30	Pass
Ochratoxin A		20.00	2.40	Pass

LOQ = Limit of Quantitation; The reported result is based on a sample weight with the applicable moisture content for that sample; Unless otherwise stated all quality control samples performed within specifications established by the Laboratory.

908 N. Howard St., Suite 101
Spokane, WA
(509) 284-7522
<http://traceanalytics.com/>
Lic# 0014



Sara Minier
Senior Scientist

Confident Cannabis
All Rights Reserved
support@confidentcannabis.com
(866) 506-5866
www.confidentcannabis.com



This product has been tested by Trace Analytics, Inc using valid testing methodologies and a quality system as required by state law. Values reported relate only to the product tested. Trace Analytics, Inc makes no claims as to the efficacy, safety or other risks associated with any detected or non-detected levels of any compounds reported herein. This Certificate shall not be reproduced except in full, without the written approval of Trace Analytics, Inc. Lic# 0014 - Foreign Matter (Visual Inspection) - Moisture (Moisture Analyzer) - Water Activity (Water Activity Meter) - Microbiological (3M Petrifilm/qPCR) - Potency (HPLC-UV) - Residual Solvents (GCMS) - Mycotoxins (ELISA)