

Moon Mother Hemp Company

2425 Canyon Boulevard
Boulder, CO 80302
jessica@moonmotherhemp.com
(303) 442-2983
Lic. #


Sample: 05TRC002619.O1962

Strain: Pet Tincture 250mg
Sample Received: 05/06/2019; Report Created: 05/08/2019
Leaf Inventory/Lot ID: ; Leaf Pre-Transfer Inventory/Lot ID:
Leaf Batch ID: ; Leaf Pre-Transfer Batch ID:
Leaf Manifest ID:

Pet Tincture 250mg

Other, Industrial Hemp
External Batch ID:





16.49
mg/unit

THC Potency

255.25
mg/unit

CBD Potency

271.74
mg/unit

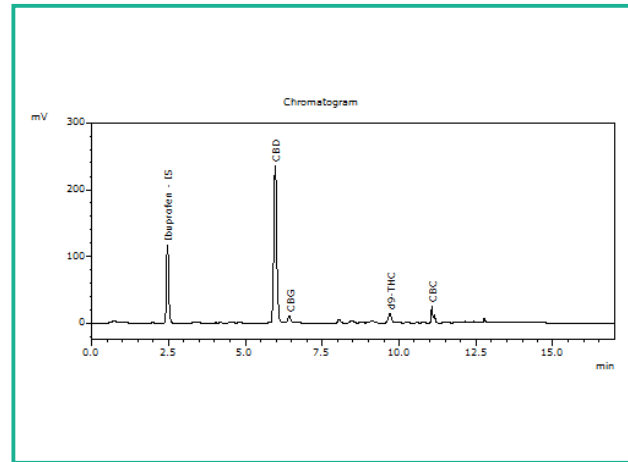
Total Potency*

Cannabinoids

1 Unit = 1 oz Bottle, 26.589g

Analyte	Mass mg/unit	Mass mg/g
THCa	ND	ND
Δ9-THC	16.49	0.62
CBD	255.25	9.60
CBDa	ND	ND
CBN	ND	ND
Δ8-THC	ND	ND
THCV	ND	ND
CBDV	ND	ND
CBG	10.37	0.39
CBGa	ND	ND
CBC	5.58	0.21
Total	287.69	10.82

Chromatogram



THC Potency = THCa * 0.877 + Δ9-THC; CBD Potency = CBDa * 0.877 + CBD; LOQ = Limit of Quantitation; Total Potency* = Total THC + Total CBD. Unless otherwise stated all quality control samples performed within specifications established by the Laboratory.

908 N. Howard St., Suite 101
Spokane, WA
(509) 284-7522
<http://traceanalytics.com/>
Lic# 0014

Gwen Bode
Gwen Bode
Scientist I

Confident Cannabis
All Rights Reserved
support@confidentcannabis.com
(866) 506-5866
www.confidentcannabis.com



This product has been tested by Trace Analytics, Inc using valid testing methodologies and a quality system as required by state law. Values reported relate only to the product tested. Trace Analytics, Inc makes no claims as to the efficacy, safety or other risks associated with any detected or non-detected levels of any compounds reported herein. This Certificate shall not be reproduced except in full, without the written approval of Trace Analytics, Inc. Lic# 0014 - Foreign Matter (Visual Inspection) - Moisture (Moisture Analyzer) - Water Activity (Water Activity Meter) - Microbiological (3M Petrifilm/qPCR) - Potency (HPLC-UV) - Residual Solvents (GCMS) - Mycotoxins (ELISA)